

NL900

- Simple cable replacement for retrofits & new installs
- Transmits around corners, through walls & obstructions
- Reliable communication at rates up to 115.2 Kbps

APPLICATION IDEAS



Weigh Scales — Instantly access weight and measurement data. Link virtually cuts wires to all brands of scale equipment, from indicators to receipt printers.



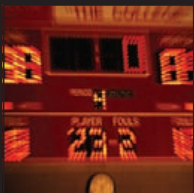
Process Control — Set up any factory more conveniently. Engineers and technicians can quickly move data links from machine to machine without costly wiring.



Kiosks & P.O.S. — Small & portable, links make it possible to set up equipment where it best serves customers. Use at retail stores, service stations, events, etc.



Data Logging — Upload data to your PC from your logger or monitor without getting up from the chair. Use Link for tank level-monitoring, control instruments, etc.



Electronic Signs — Faster, cheaper & less invasive than trenching to lay cable, Links simply attach to the serial ports of the PC and sign or scoreboard.

making **RF** the strongest link

Industrial Wireless Modem



PRODUCT OVERVIEW

RF NEULINK'S NL900 stand-alone transceiver can be set up in minutes to virtually cut the cables between RS232 devices. Its flexibility and price allows users to quickly upgrade wired terminals to cordless operation in industrial, commercial, even residential applications.

Powered by a 1000mW 900 MHz radio, each NL900 unit is small and easily portable for use in mobile and temporary settings as well as for fixed installations. Optional software enables custom configurations based on user needs.

This modem implements a proprietary communication protocol to provide secure local data transmissions. Because it uses FHSS technology, the data remains reliable over distances of up to 10 miles line-of-sight (900 MHz). Use of a license-free frequency band ensures that the NL900 is ready to use with no further certification requirements. Every unit is backed by a 30-day guarantee and full warranty with technical support.

rfneulink

making **RF** the strongest link
Division of RF Industries

7610 Miramar Road, San Diego, CA 92126-4202
(800)233-1728 or (858)549-6340 Fax: (858)549-6349
Email: rwhite@rfneulink.com Website: www.rfneulink.com

RF232® TRANSPARENT PROTOCOL

Change configuration commands:

Configuration can be changed through a command/data interface signal or AT commands. Change-on-the-fly parameters include base or remote designation, destination MAC address, channel number (to communicate with a different base), enter/exit low-power modes, etc. Custom settings are available by user request.

Handshaking: CTS to hold off the host; RTS to hold off the transceiver. Full modem-mode available.

In-range indicator: Hardware link indication of remote in range of base.

ERROR HANDLING

Error detection: Multi-stage error detection with transmitter retries for RF system and raw data. Duplicate packets are filtered out when data is received more than once due to retries and missed ACKs.

Data encryption standard (DES): DES uses an established algorithm and a 56-bit key stored in onboard EEPROM to protect data. Available in NL900 version only.

SETUP AND OPERATION

The complete system is comprised of a central base and any number of remote nodes that can operate in point-to-point or point-to-multipoint networks. Multiple sub-networks can be created by assigning unique radio addresses to specific device groups. RF Neulink is available to support in-system design and applications.

ORDERING INFO

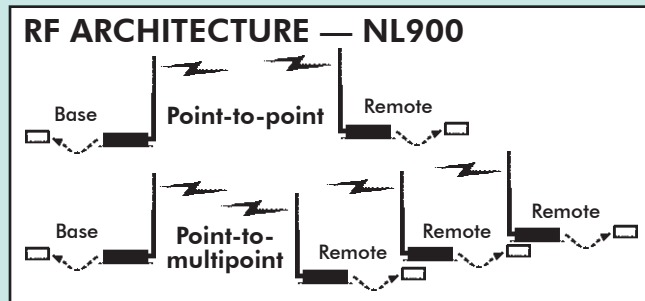
To contact RF Neulink's Sales Team for details, call toll-free 1-800-233-1728 or email rwhite@rfneulink.com.

SPECIFICATIONS

Standard interface	RS232 (DB9 male)
Frequency band.....	902 to 928 MHz
Modulation.....	FHSS FSK
Serial interface data rate.....	1200-115,200 bps
Output power	1000mW variable
Input power	7Vdc to 18Vdc
Power Consumption (@12VDC).....	400mA Tx, 40mA Rx
Power Supply	AC transformer via 6-foot cable (183 cm)
Electrical requirements	Line voltage 100-120V (240V outside U.S.); Frequency 50-60 Hz
Channels.....	Up to 32
Security	1-byte system ID, DES
Sensitivity	-100 dB @ full RF data rate
Range	Up to 10 miles (16 km)
Temperature	-30° to +60°C
Humidity	90% at 40°C non-condensing
Dimensions	4.75 x 2.75 x 1.17 inches (121 x 70 x 30 mm)
Weight	<6 oz. (<170 g)
Antenna; connector	Dipole; RP-SMA jack (female)
Configuration software.....	Included, for Windows OS

RF Neulink reserves the right to change specifications of this product at any time without notice and without obligation to notify any person of such changes.

For outside operation of radio modem products a NEMA 4 enclosure is recommended.



WHO IS RF NEULINK?



RF Neulink has been manufacturing radio link equipment for 30 years. Our line of transmitter and receiver units for point-to-point communications, paging excitors, radio data and control products reflect our experience in this marketplace.

Our publicly held parent company, RF Industries (NASDAQ symbol RFIL), provides a well capitalized base for continued future growth and product development. RF Neulink's customers include Fortune 500 companies, municipalities, government agencies, educational and health institutions, utilities, small companies, casinos, irrigation companies, armed forces here and abroad, and many others that need or want reliable, state-of-the-art, cost-effective communications links.

rfneulink
making **RF** the strongest link
Division of RF Industries

7610 Miramar Road, San Diego, CA 92126
(800)233-1728 or (858)549-6340
Fax: (858)549-6349
Email: rwhite@rfneulink.com
Website: www.rfneulink.com